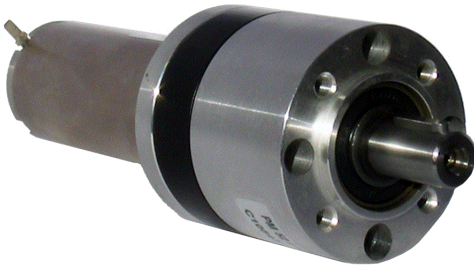


# Direct Current Geared Motor DCX32L/PM52



**The advantages :**  
 Servo gear motor - Exceptional power/dimensions ratio. The DCX range is completely configurable online at <http://dcx.maxonmotor.com>

**Associated products :**

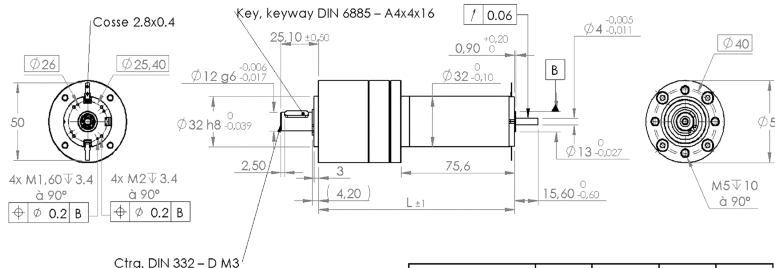
- > **Encoder**  
 HEDL 5540  
 HEDS 5540
- > **Power supply**  
 DR-120-24  
 DRP-240-24  
 DRP-480S-24  
 RS-100-24  
 RS-150-24  
 SP-320-24
- > **Controller**  
 EPOS4 50/5  
 EPOS4 70/15  
 ESCON 50/5  
 ESCON 70/10

mdp

0.33 Nm - 25 Nm

Version	Reduction ratio	Number of stages	Efficiency	No-load speed (rpm)	Rated speed (rpm)	Rated Torque (Nm)	Rated Current (mA)
24V/0004	3.70	1	0.80	2235	2107	0.33	4.3
24V/0016	15.88	2	0.75	521	491	1.30	4.3
24V/0025	25.01	2	0.75	331	312	2.10	4.3
24V/0051	50.89	3	0.70	163	153	3.10	4.3
24V/0093	92.70	3	0.70	89	84	7.30	4.3
24V/0169	168.84	3	0.70	48	46	13.20	4.3
24V/0219	218.12	4	0.65	38	36	15.90	4.3
24V/0292	291.71	4	0.65	28	27	21.20	4.3
24V/0398	397.29	4	0.65	21	20	25.00	3.5

Commutation	Graphite
Number of commutator segments	11
Reduction gear type	planetary
Bearings	ball bearings 2RS
Maximum axial load	100 N
Maximum radial load	200 N
Slip force	500 N
Angular play under load	0.70 °
Maximum input speed	3000 tr/mn
Min ambient operating temperature	-30 °C
Max ambient operating temperature	100 °C
input stage	Delrin
output stage	Steel
Minimum weight	1020 g



Nombre d'étages	1	2	3	4
L	130,9	145,1	159,3	173,5

DCX32LG + PM52

Edition juin 2022 / subject to modification