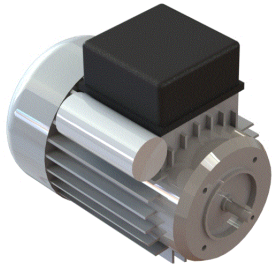


Alternating Current Motor M56B14



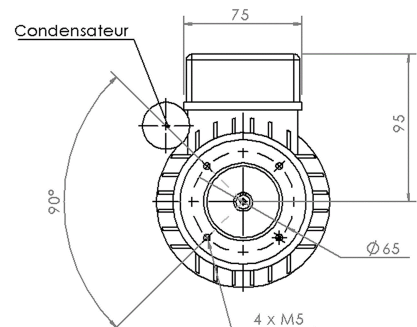
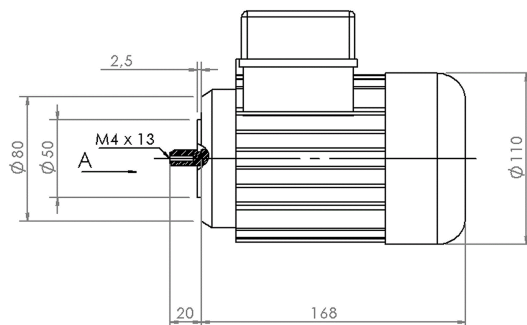
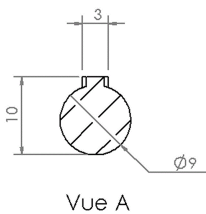
The advantages :
 Single-phase standard or balanced for fast direction changeover
 Reliable product, suitable for all industrial sectors - Optimum efficiency
 Numerous optional accessories

mdp x neri

90 W

Version		EQUIL	STD
Nominal voltage	V	230	230
Frequency	Hz	50	50
Mains		MONO	MONO
Two-way directions		oui	non
No-load speed	tr/mn	1500	1500
Nominal speed	tr/mn	1350	1350
Nominal torque	mNm	700	700
Nominal operating power output	W	90	90
Stall torque	mNm	420	420
Absorbed current	mA	900	900
Capacitors	µF	6.3	6.3
Rotor inertia	gcm ²	1500	1500

Rotor	squirrel-cage
Bearings	ball bearings
Maximum axial load (dynamic)	120 N
Maximum radial load	250 N
at a distance from the face of:	10 mm
Min. ambient operating temperature	-15 °C
Maximum ambient operating temperature	40 °C
Weight	3300 g
Protection	IP55
Insulation class	F



Edition:Juli 2022 / subject to modification

Version of06/07/2022