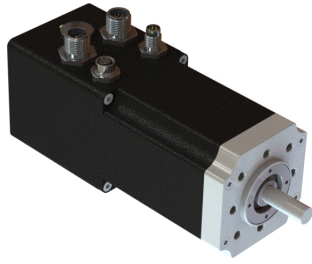


Brushless Motor IDX56M



The advantages :
 Brushless motor with integrated control electronics - Integrated 12 bit absolute encoder - IP 65 - CANopen control
 Optional brake
 Cables sold separately

Associated products :

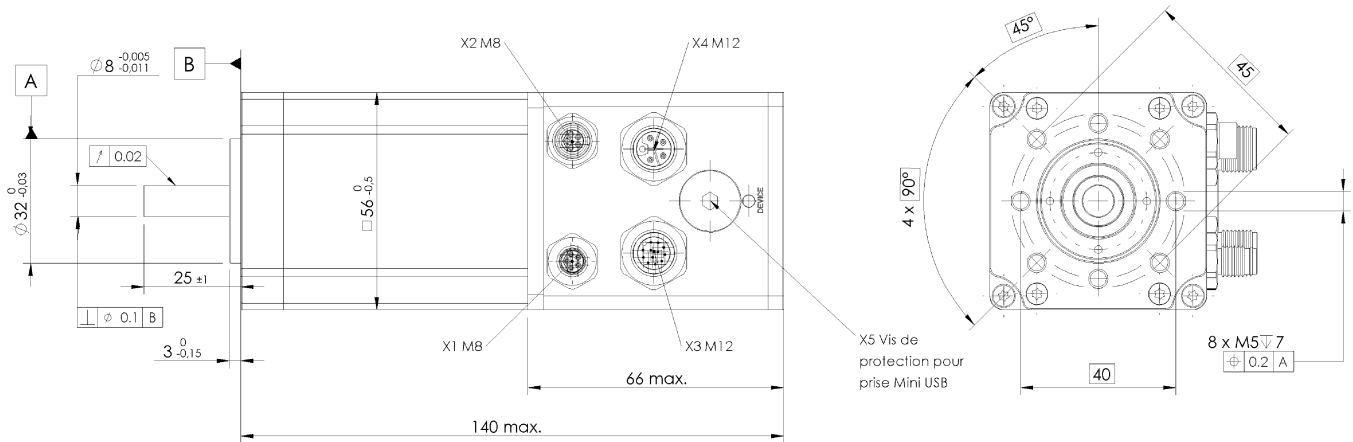
- > Connector
- CABLE CAN M12/M8 IDX
- CABLE CAN/CAN IDX
- CABLE CANopen IDX
- CABLE I/O IDX
- CABLE POWER IDX
- CONNECTOR CANopen

maxon motor

200 W - 266 W

Power supply voltage (Ua)	V	24
Speed at current In	tr/mn	4500
Torque at current In	mNm	424
Maximum permanent current In	mA	10734
Ua no-load speed +/- 10%	tr/mn	5150
No-load current +/- 50%	mA	911
Ua stall current	mA	24000
Ua stall torque	mNm	888
Torque constant	mNm/A	39.5
Speed constant	tr/mn/V	242
Speed/torque gradient	tr/mn/mN	0.3670
Limit speed	tr/mn	6000
Maximum Ua operating power	W	120
Inertia	gcm ²	170.09
Ambient/Housing thermal	K/W	2.47
Coil/Housing thermal resistance	K/W	1.16
Coil thermal time constant	s	39.7
Housing thermal time constant	s	1320
Test voltage	V	24
Nominal operating power output	W	200
Max permanent operating power	W	266

Commutation	brushless
Number of phases	3
Bearings	ball bearings
Maximum axial load (dynamic)	12 N
Maximum radial load	110 N
at a distance from the face of:	12.5 mm
Minimum ambient operating temperature	-20 °C
Maximum ambient operating temperature	+85 °C
Weight	1070 g
Type of sealing	IP65



Edition: Juli 2022 / subject to modification

Version of 06/07/2022